

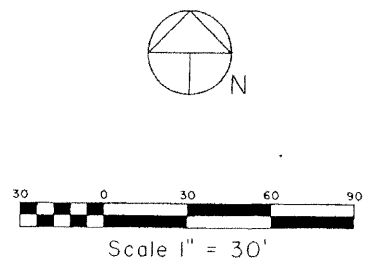
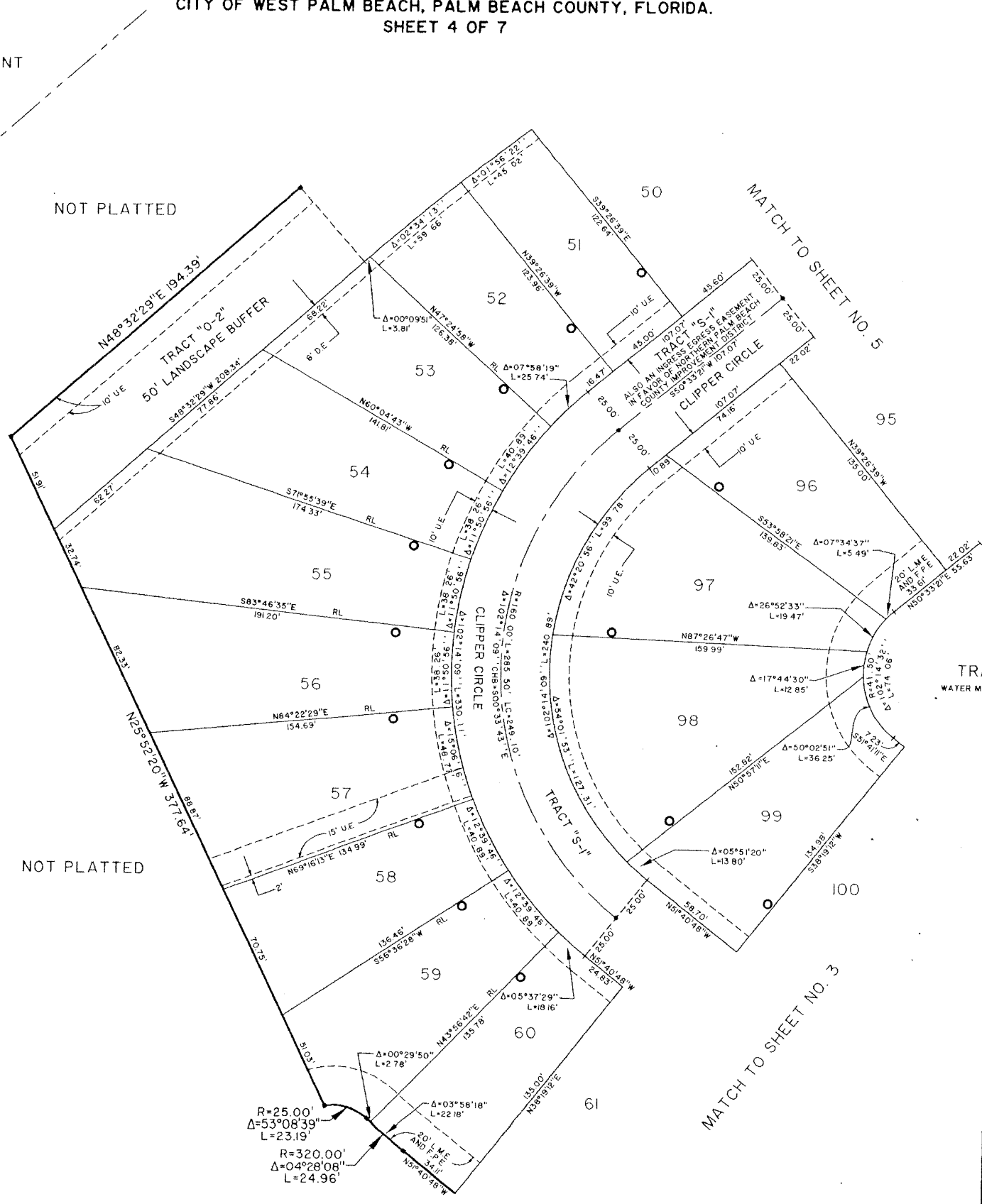
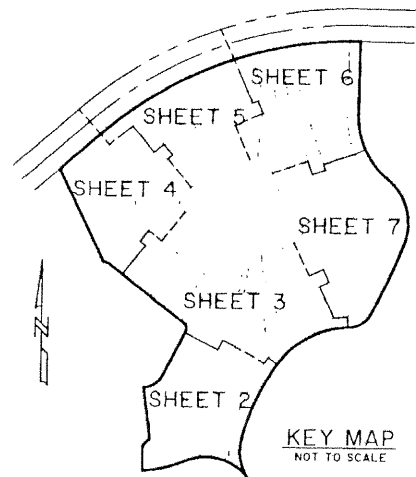
BAYWINDS R.P.D. PLAT NO. 4

BEING A PORTION OF SECTION 19, TOWNSHIP 43 SOUTH, RANGE 42 EAST,
 LYING IN SECTION 19, TOWNSHIP 43 SOUTH, RANGE 42 EAST,
 CITY OF WEST PALM BEACH, PALM BEACH COUNTY, FLORIDA.
 SHEET 4 OF 7

185

NOT PLATTED
 CONSERVATION EASEMENT
 (ORB #532, PAGE 984)

STATE OF FLORIDA
 COUNTY OF PALM BEACH
 THIS PLAT WAS FILED FOR RECORD AT
 M. THIS DAY OF 2001
 AND ONLY RECORDED IN PLAT BOOK NO.
 ON PAGE
 DOROTHY H. WILKEN, CLERK OF THE CIRCUIT COURT
 BY DC



Landmark Surveying & Mapping Inc.
 1850 Forest Hill Boulevard
 Ph (561) 433-5405 Suite 100 WPB Florida
 LB # 4396

BAYWINDS R.P.D. PLAT NO. 4
 (TRACT C)